

What is MS Fabric and how to put your BC data in it



Speaker's intro



- Bert Verbeek
- Working with NAV/BC for 16 years in several roles
- Technical Solution Architect @ 4PS Group
- Microsoft MVP – Business Applications
- Twitter and LinkedIn: bertverbeek
- Blog: bertverbeek.nl



Agenda

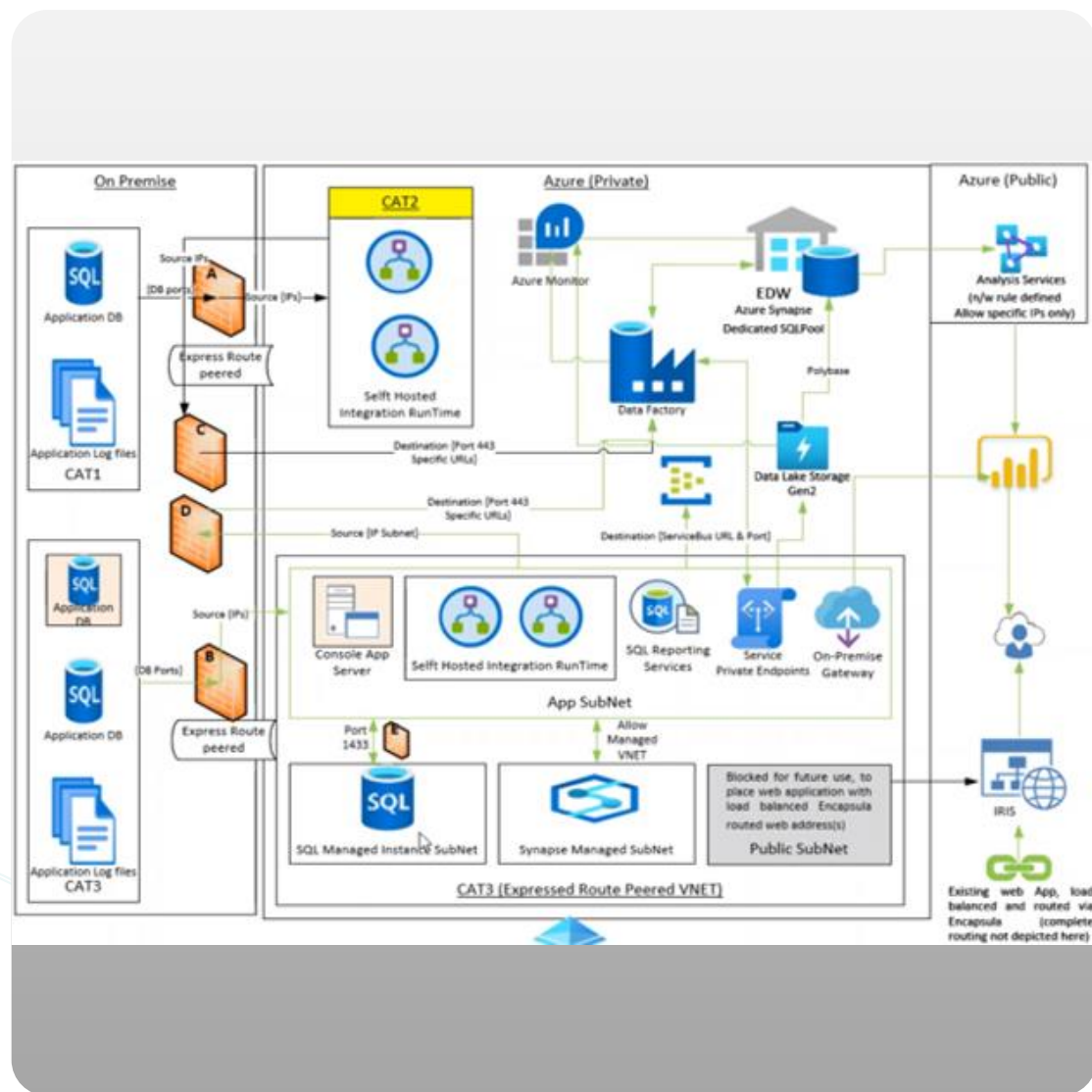


- What is Microsoft Fabric?
- How to get your BC data in?
- Data movement inside MS Fabric
- Real Life Case

What is MS Fabric?

What is MS Fabric?

- Many different apps
- Many vendors
- Integrations mostly complex and fragile



What is MS Fabric

//

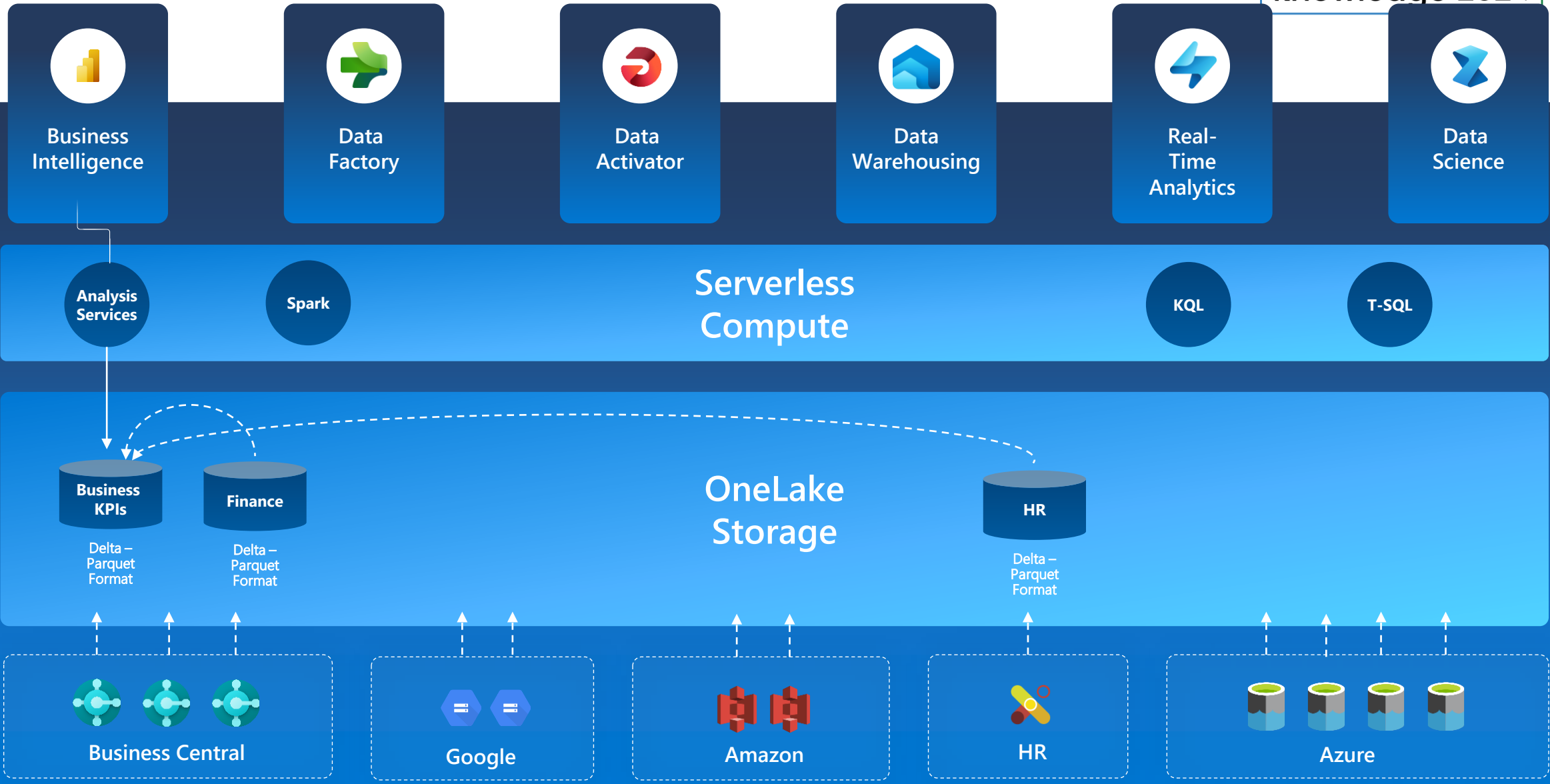
Simplify,

I am the Chief Data Officer and don't want to be the Chief Integration Officer."

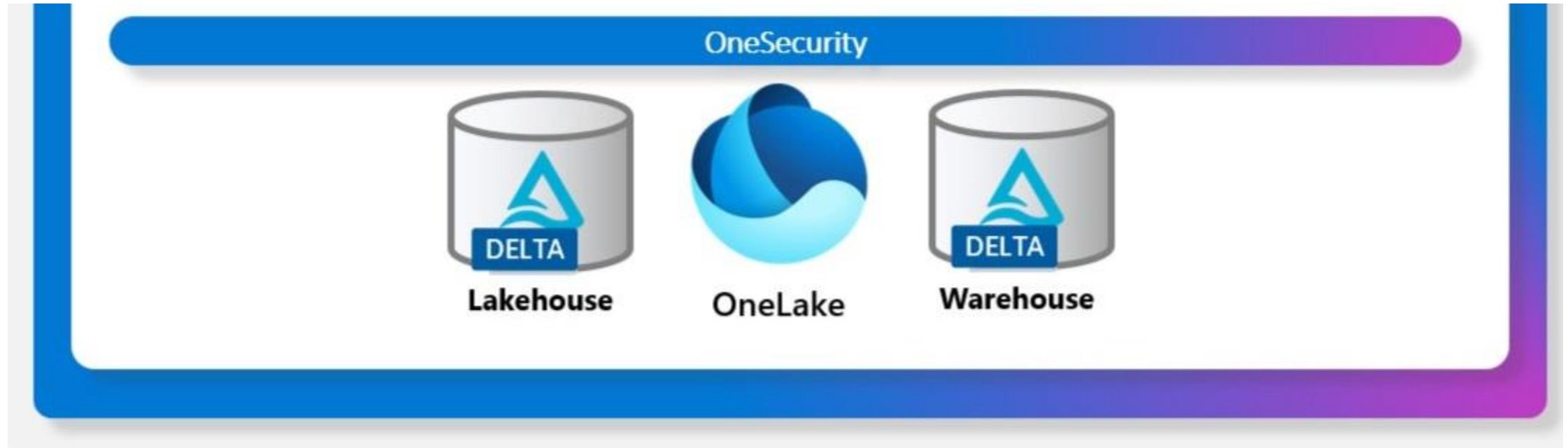
Every CDO, Every Enterprise

What is MS Fabric

days of uk knowledge 2024



What is MS Fabric




Some considerations

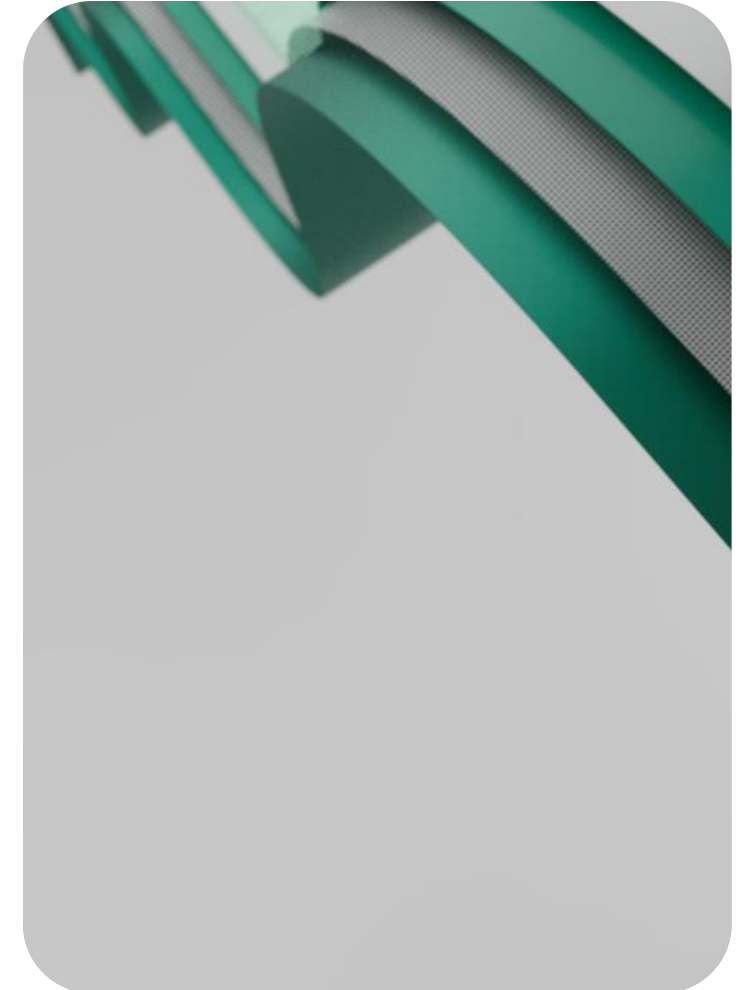
- New product
- Fast integration because of Direct Lake
- License guide:

SKU	CAPACITY UNITS (CU)	POWER BI SKU	POWER BI V-CORES	HOURLY \$	MONTHLY \$
F2	2	-	0.25	\$0.36	\$262.80
F4	4	-	0.5	\$0.72	\$525.60
F8	8	EM/A1	1	\$1.44	\$1,051.20
F16	16	EM2/A2	2	\$2.88	\$2,102.40
F32	32	EM3/A3	4	\$5.76	\$4,204.80
F64	64	P1/A4	8	\$11.52	\$8,409.60
F128	128	P2/A5	16	\$23.04	\$16,819.20
F256	256	P3/A6	32	\$46.08	\$33,638.40
F512	512	P4/A7	64	\$92.16	\$67,276.80
F1024	1024	P5/A8	128	\$184.32	\$134,553.60
F2048	2048	-	256	\$368.64	\$269,107.20

OneLake
Power BI



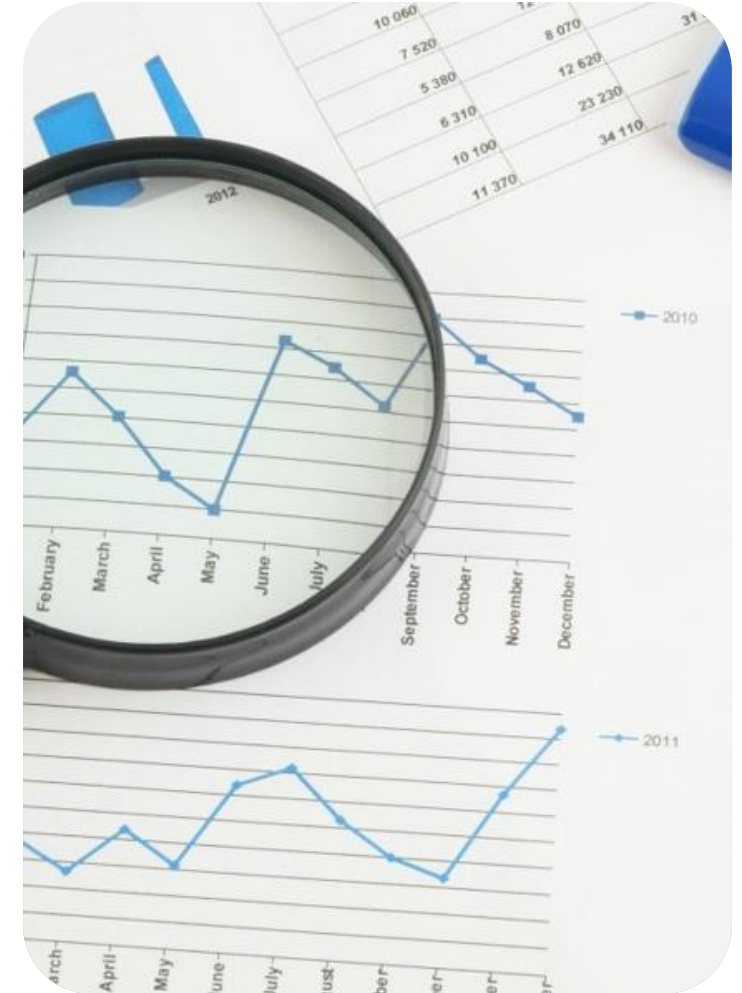
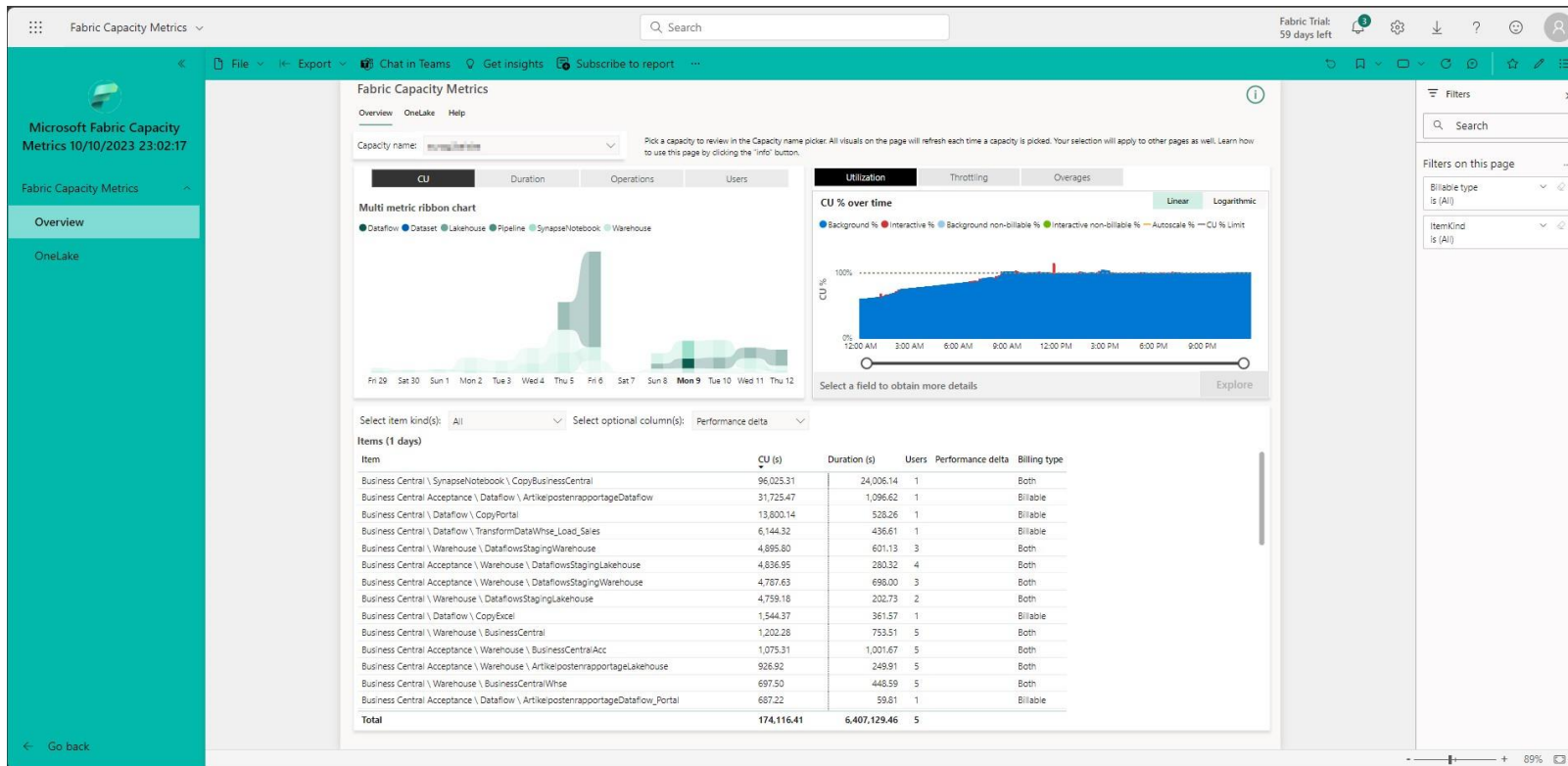
Data Analyst



What is a CU?

days of knowledge uk 2024

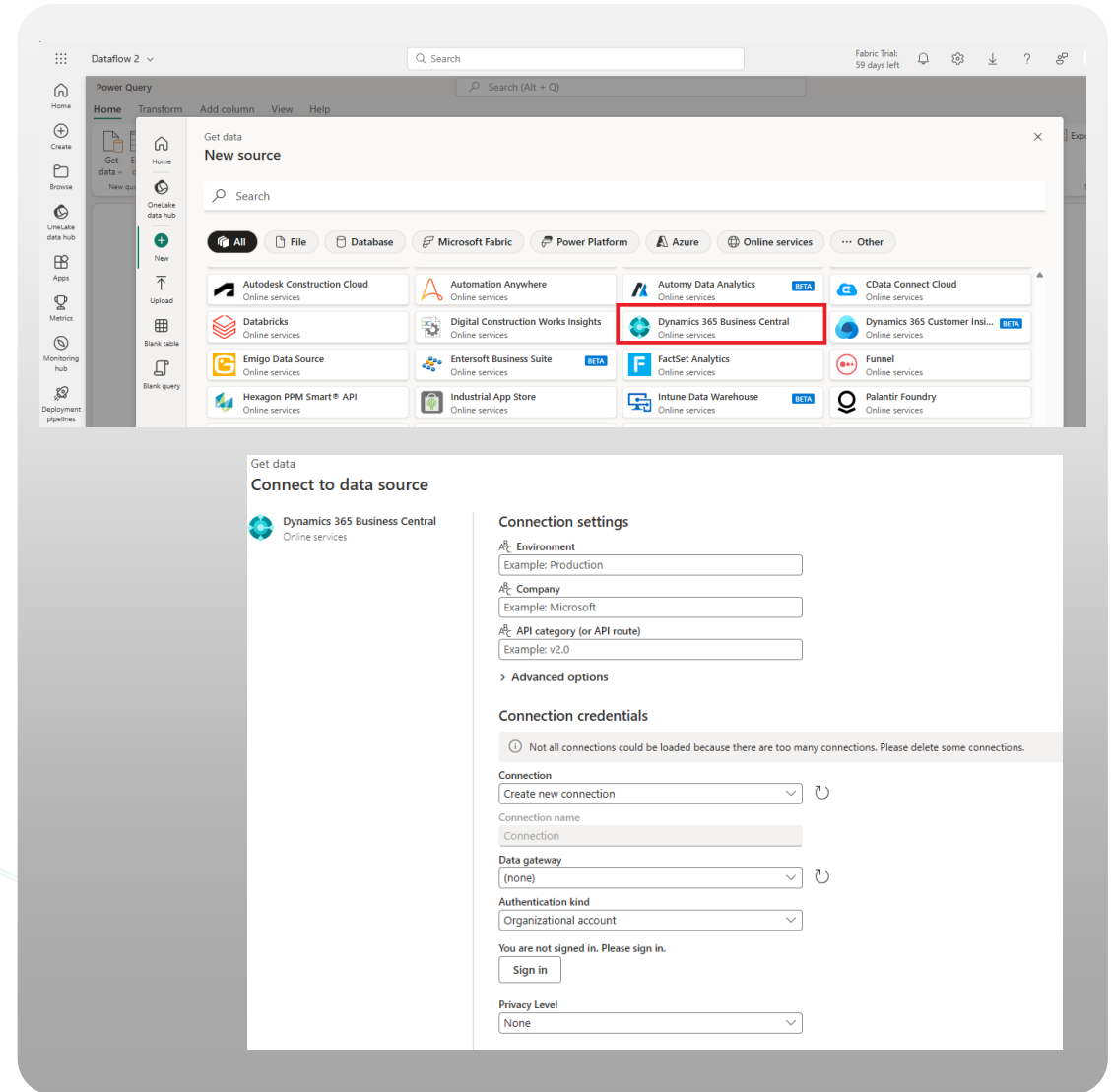
- Fabric F2 = $2 * 24 * 3600 = 172.800$ CU (s)
- [Install the Microsoft Fabric capacity metrics app – Microsoft Fabric | Microsoft Learn](#)



How to get your BC data in?

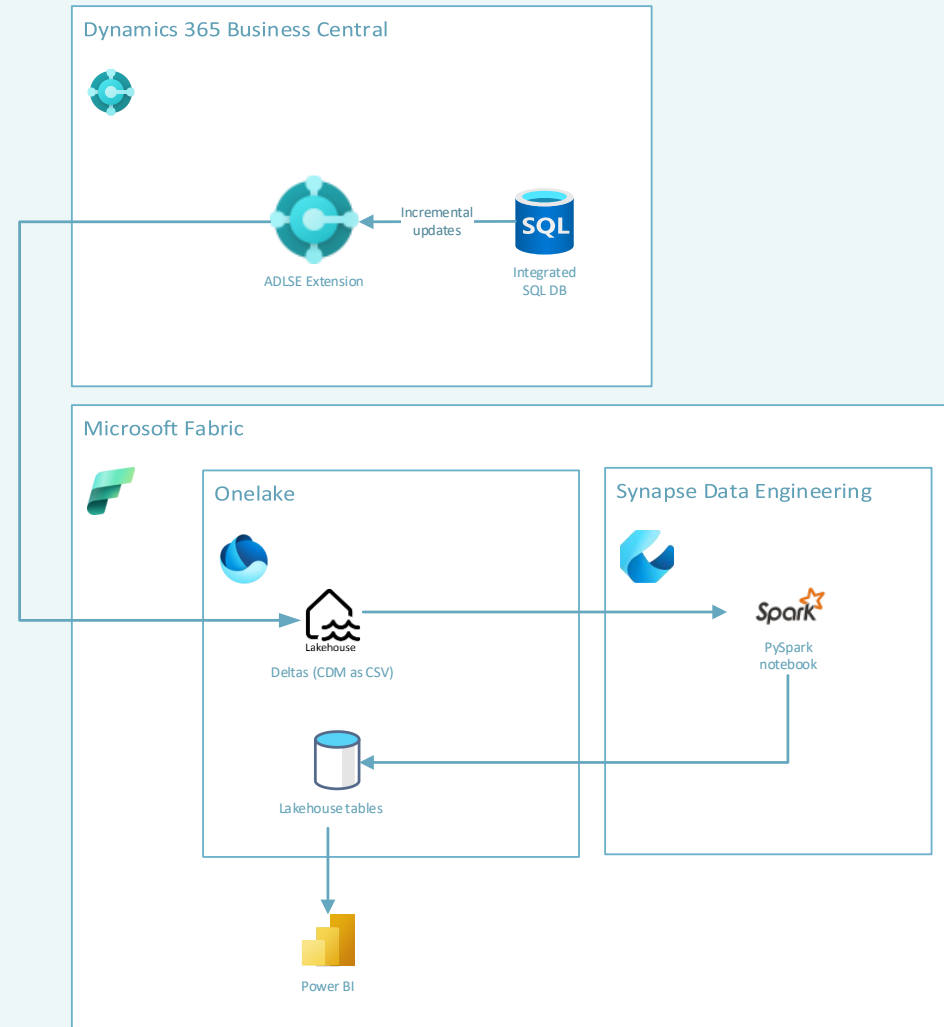
Through API's

- With Dataflow
- From ReadOnly Replica
- Affects your NST's
- Incrementals not yet possible (In MS Fabric)
- Takes some time



With bc2adls

- Open source app
- Export to Azure Data Lake / MS Fabric
- Choose your tables / fields



DEMO

Trigger notebook

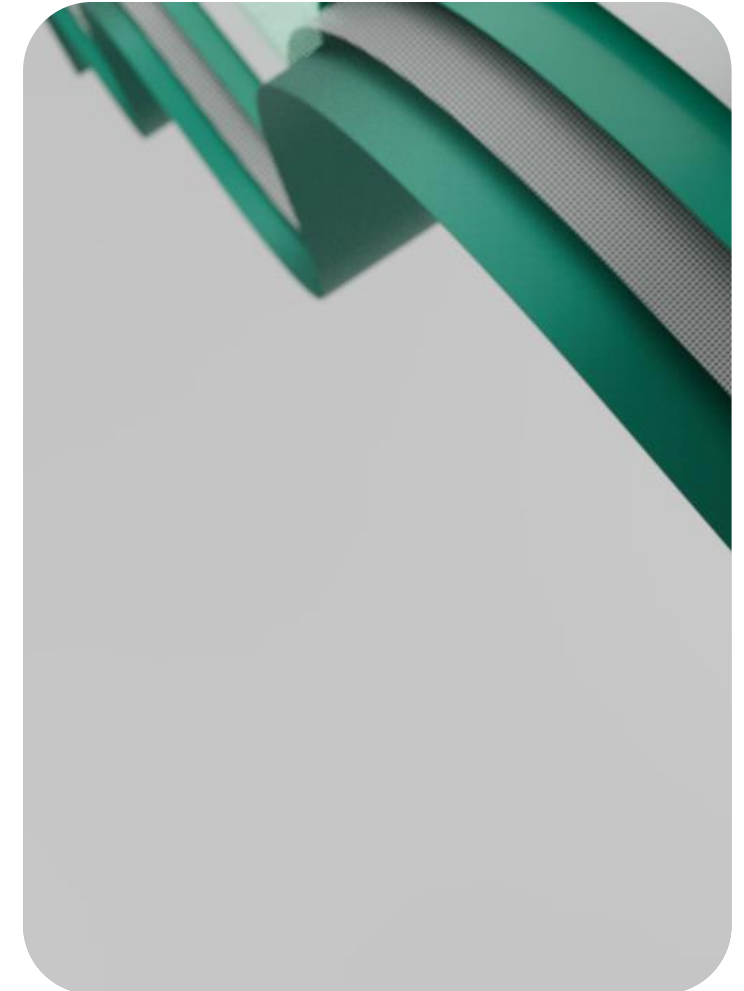
- Api call
 - [Manage and execute Fabric notebooks with public APIs – Microsoft Fabric | Microsoft Learn](#)

The screenshot displays the Microsoft Power Automate interface for configuring a trigger. The top navigation bar shows 'Contoso Electronics' and 'Power Automate' with a search bar. The main area is titled 'Untitled' and shows a configuration panel for the trigger 'When a business event occurs (V3)'. The configuration panel includes the following fields:

- Environment ***: NL
- Event ***: Export is finished (The bc2adls team)
- Advanced parameters**: Showing 1 of 1 (with 'Show all' and 'Clear all' links)
- Company (Optional)**: The Dynamics 365 Business Central company. Leave this empty to subscribe t... (with a close 'X' icon)

At the bottom of the configuration panel, it states 'Connected to admin@M365x27595860.onmicrosoft.com. [Change connection](#)'.

The main canvas shows a grid with a single trigger card for 'When a business event occurs (V3)' and a plus sign icon at the bottom center for adding more steps.

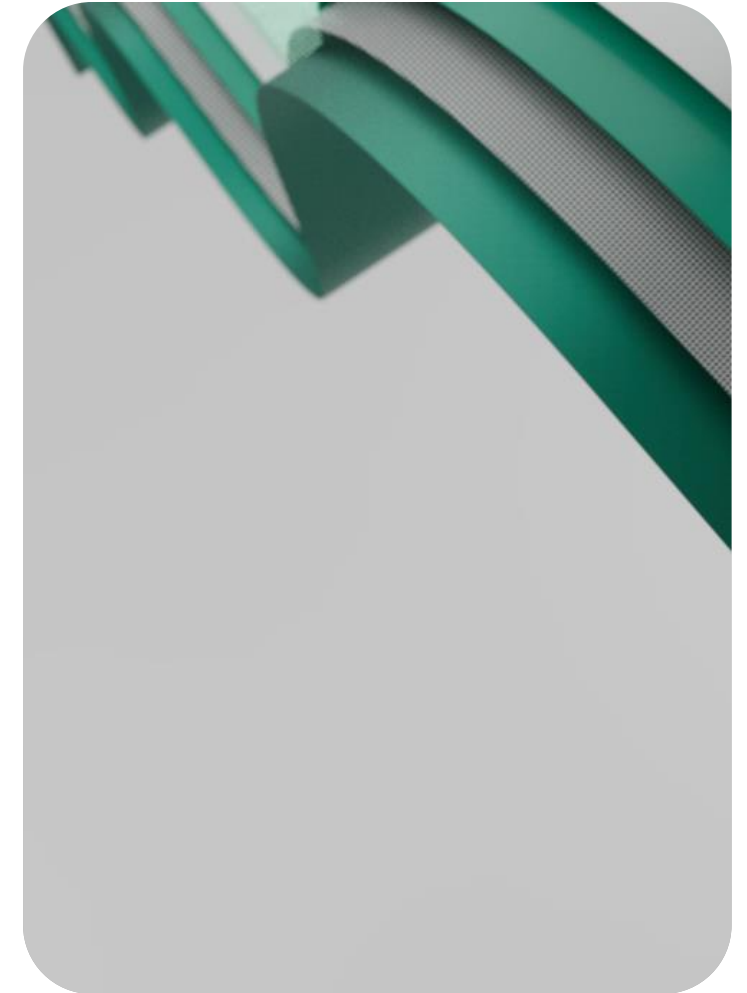


Data movement inside MS Fabric

Data movement inside MS Fabric

- Power Query
- Data Wrangler

DEMO



Real Life Case

The case

- Moving from onprem to SaaS (3/4 year life in SaaS)
- Using JetReports, Excel, Direct access SQL
- Customer has also a Webshop
- 200 orders a day with 50 – 200 lines
- Big amount of G/L Entries and Item Ledger Entries
- Refresh every 15 minutes

Table ID	Table	# Fields selected	No. of Database Records	# Avg Records a Day
17	G/L Entry	17	9.748.931	35.195
21	Cust. Ledger Entry	12	70.653	255
25	Vendor Ledger Entry	9	21.943	79
32	Item Ledger Entry	15	2.781.124	10.040
112	Sales Invoice Header	25	19.718	71
113	Sales Invoice Line	24	2.195.072	7.924
114	Sales Cr.Memo Header	23	18.324	66
115	Sales Cr.Memo Line	23	152.382	550
120	Purch. Rcpt. Header	26	14.293	52
121	Purch. Rcpt. Line	14	124.176	448
5107	Sales Header Archive	31	81.326	294
5108	Sales Line Archive	25	2.374.826	8.573
5109	Purchase Header Archive	27	15.241	55
5110	Purchase Line Archive	25	123.058	444
5802	Value Entry	4	7.210.292	26.030
5823	G/L - Item Ledger Relation	2	19.137.868	69.090
6650	Return Shipment Header	24	927	3
6651	Return Shipment Line	11	2.076	7
54323	Packaging Ledger Entry	15	258.723	934

The issue

- Deleted data in Sales Orders
- API limits (bc23 – less problems)
- Refresh rate was only 2 hours
- Synapse pipelines were expensive
- Starting of the spark pool
- Allot of data in transaction tables



Issues and Resolutions



The solution

- MS Fabric F2 (cu)
- Export every 15 min
- Finished in 5 minutes
- Notebook every 15 minutes
- End users doesn't complain
- Attach other sources in lakehouse and combine in warehouse



sues and Resolutio





Call to Action

- Microsoft repro on archive
- Going as an open source project
 - <https://github.com/Bertverbeek4PS/bc2adls>
- Please contribute:
 - Issues
 - Features

Give us Feedback!

and help us improve!

Please rate my session in the Conference App!

and leave a constructive comment.

Thank you !

