



# HOW TO EXPORT LARGE DATA FROM BUSINESS CENTRAL TO MS FABRIC

# SPEAKERS INTRO

- Bert Verbeek
- Working with NAV/BC for 16 year in several roles
- Technical Solution Architect @ 4PS Groups
- Microsoft MVP – Business Applications
- Twitter and LinkedIn: bertverbeek
- Blog: bertverbeek.nl



# AGENDA

- The problem
- What is Microsoft Fabric
- What is bc2adls
- Export to Microsoft Fabric
- Data movement inside Microsoft Fabric
- Trigger notebook
- Real life case

# THE PROBLEM

- How to export large amounts of data
- APIs are OK but have some limitations
  - Doesn't work with big datasets
  - How manage deleted data

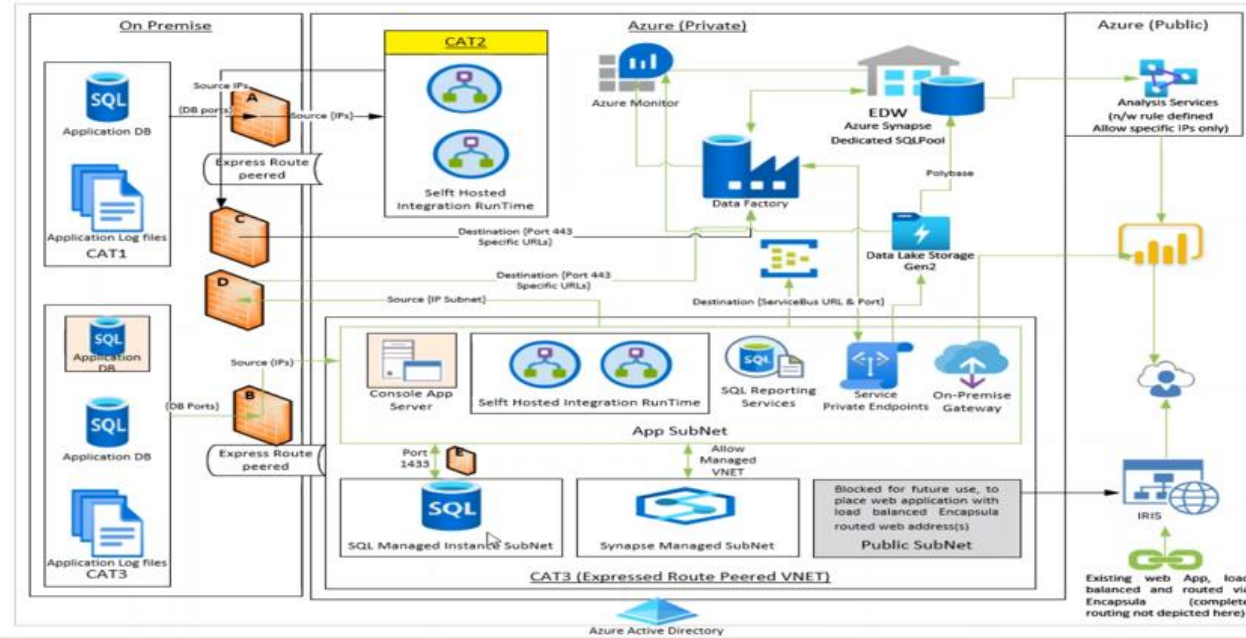


01

# WHAT IS MICROSOFT FABRIC

# WHAT IS MS FABRIC?

- Many different apps
- Many vendors
- Integrations mostly complex and fragile



# WHAT IS MS FABRIC?

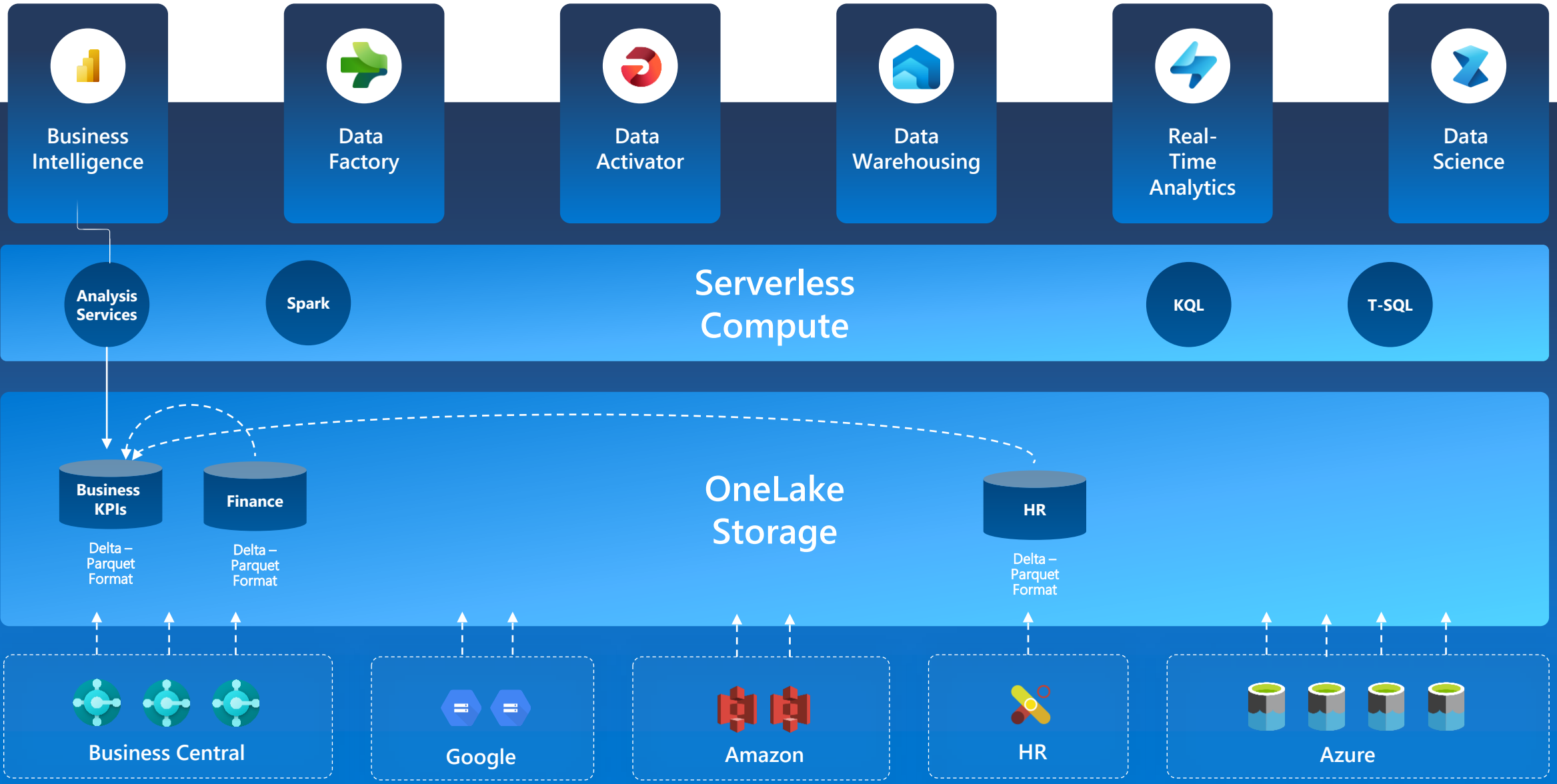
//

**Simplify,**

I am the Chief Data Officer  
and don't want to be the  
Chief Integration Officer."

Every CDO, Every Enterprise

# WHAT IS MS FABRIC?





02

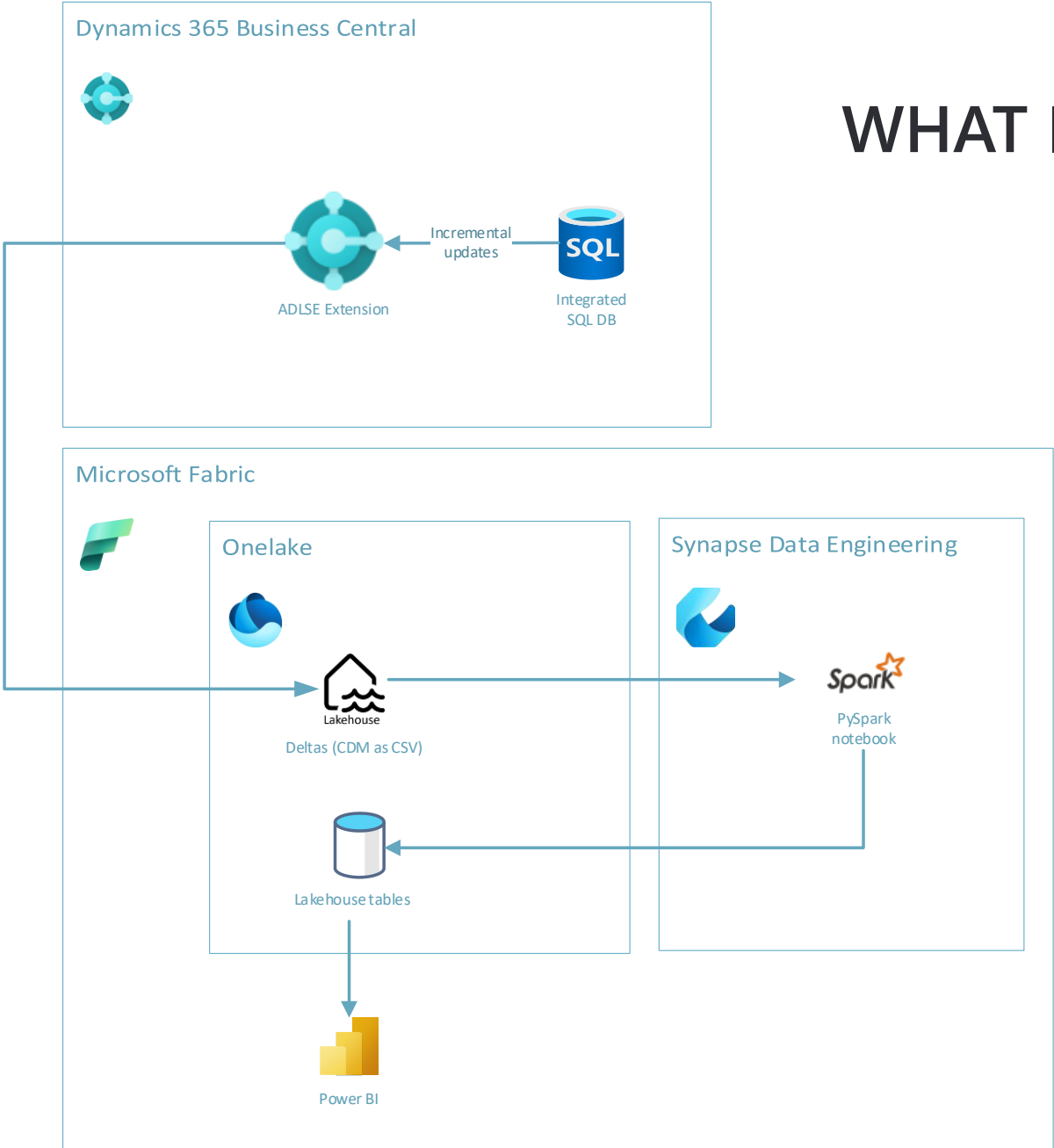
# WHAT IS BC2ADLS

# WHAT IS BC2ADLS

- Created by Soumya Dutta (MS) and Henri Schulte (MS)
- Experiment to move data to Azure Data Lake
- Open Source app
- Option to move data to Microsoft Fabric



# WHAT IS BC2ADLS

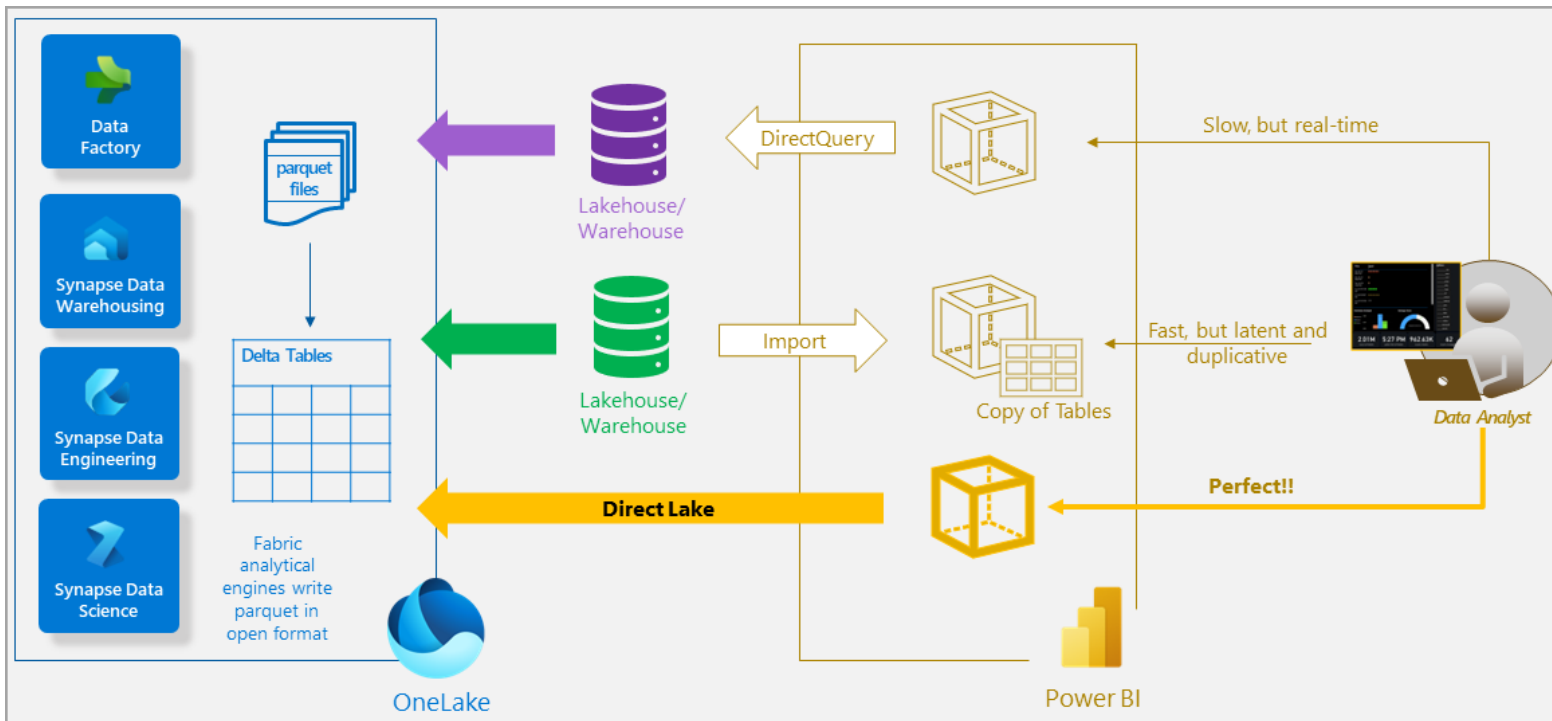


# EXPORT TO MICROSOFT FABRIC

**DEMO**

# SOME CONSIDERATIONS

- New product
- Notebook is very fast
- Fast integration with Direct Lake



F2048	2048	-	256	\$368.64	\$269,107.20
-------	------	---	-----	----------	--------------

# DATA MOVEMENT INSIDE MICROSOFT FABRIC

- Power Query
- Data Wrangler

# TRIGGER NOTEBOOK

- API call
  - Manage and execute Fabric notebooks with public APIs - Microsoft Fabric | Microsoft Learn

The screenshot displays the Microsoft Fabric user interface. At the top, the header shows 'Contoso Electronics' and 'Power Automate' with a search bar. Below the header, the breadcrumb 'Untitled' is visible. The main content area is titled 'When a business event occurs (V3)'. On the left, there are tabs for 'Parameters', 'Settings', 'Code View', 'Testing', and 'About'. The 'Parameters' tab is active, showing configuration options: 'Environment' set to 'NL', 'Event' set to 'Export is finished (The bc2adls team)', and 'Advanced parameters' set to 'Showing 1 of 1'. There are also links for 'Show all' and 'Clear all'. At the bottom of the parameters section, it shows 'Company (Optional)' with a dropdown menu and a 'Change connection' link. The main workspace on the right is a grid where a trigger card for 'When a business event occurs (V3)' is placed. A plus sign icon is visible at the bottom of the grid, indicating where to add more triggers.

03

# REAL LIFE CASE



# THE CASE

- Moving from onprem to SaaS (3/4 year life in SaaS)
- Using JetReports, Excel, Direct access SQL
- Customer has also a Webshop
- 200 orders a day with 50 – 200 lines
- Big amount of G/L Entries and Item Ledger Entries
- Refresh every 15 minutes

Table ID	Table	# Fields selected	No. of Database Records	# Avg Records a Day
17	G/L Entry	17	9.748.931	35.195
21	Cust. Ledger Entry	12	70.653	255
25	Vendor Ledger Entry	9	21.943	79
32	Item Ledger Entry	15	2.781.124	10.040
112	Sales Invoice Header	25	19.718	71
113	Sales Invoice Line	24	2.195.072	7.924
114	Sales Cr.Memo Header	23	18.324	66
115	Sales Cr.Memo Line	23	152.382	550
120	Purch. Rcpt. Header	26	14.293	52
121	Purch. Rcpt. Line	14	124.176	448
5107	Sales Header Archive	31	81.326	294
5108	Sales Line Archive	25	2.374.826	8.573
5109	Purchase Header Archive	27	15.241	55
5110	Purchase Line Archive	25	123.058	444
5802	Value Entry	4	7.210.292	26.030
5823	G/L - Item Ledger Relation	2	19.137.868	69.090
6650	Return Shipment Header	24	927	3
6651	Return Shipment Line	11	2.076	7
54323	Packaging Ledger Entry	15	258.723	934

## THE ISSUE

- Deleted data in Sales Orders
- API limits (q4 – less problems)
- Refresh rate was only 2 hours
- Synapse pipelines were expensive.
- Starting of the spark pool
- Allot of data in transaction tables

## Issues and Resolutions

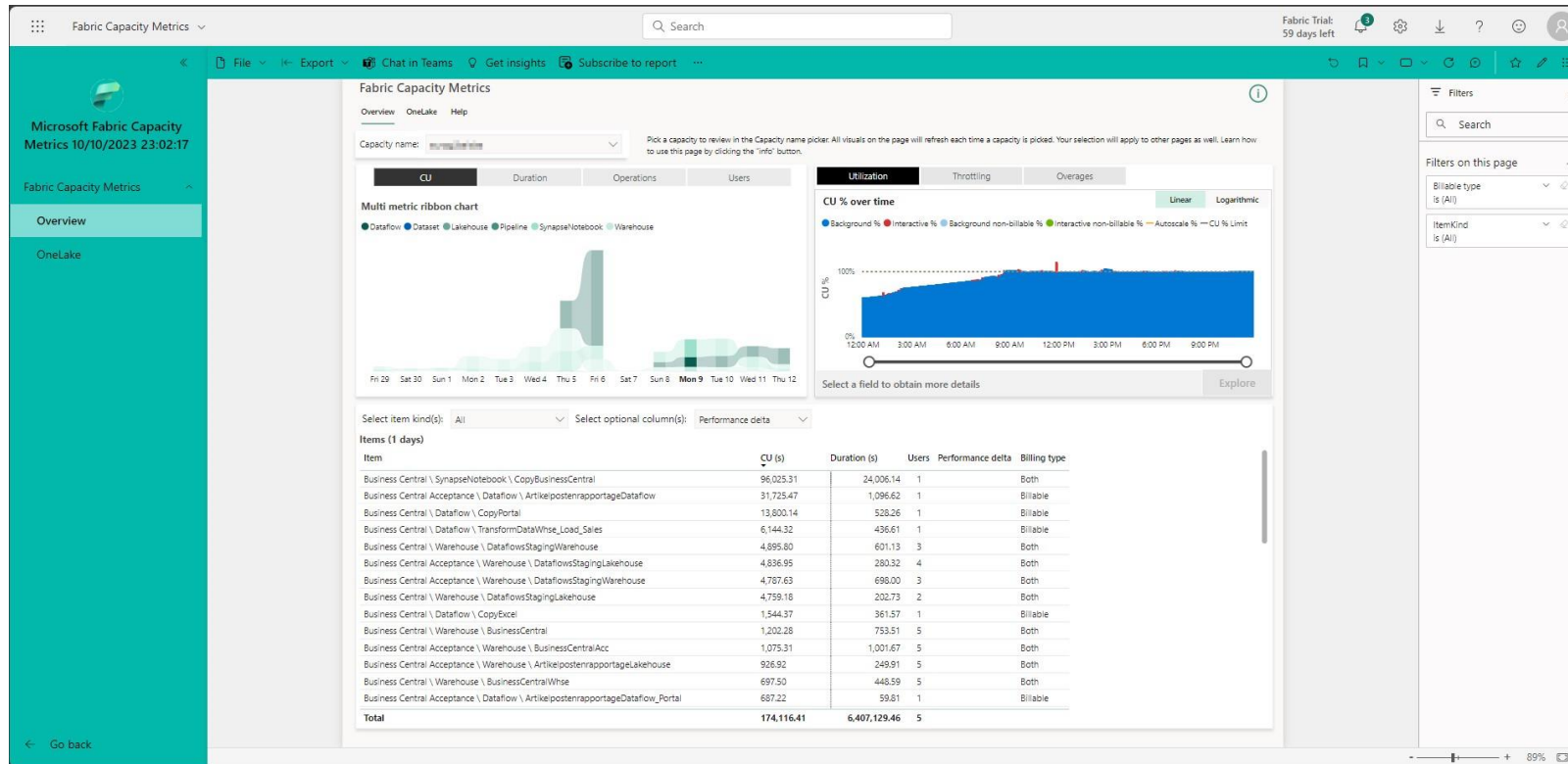
# THE SOLUTION

- MS Fabric F2 (cu)
- Export every 15 min
- Finished in 5 minutes
- Notebook every 15 minutes
- End users doesn't complain
- Attach other sources in lakehouse and combine in warehouse



# SOME FINDINGS

- Fabric F2 = 2 \* 24 \* 3600 = 172.800 CU (s)
- [Install the Microsoft Fabric capacity metrics app - Microsoft Fabric | Microsoft Learn](#)



# CALL TO ACTION

- Microsoft repro on archive
- Going as an open source project
  - [GitHub - Bertverbeek4PS/bc2adls](#)
- Please contribute
  - Issues
  - Features



# THANKS FOR YOUR ATTENTION!



[BVERBEEK@4PS.NL](mailto:BVERBEEK@4PS.NL)



[WWW.BERTVERBEEK.NL](http://WWW.BERTVERBEEK.NL)

